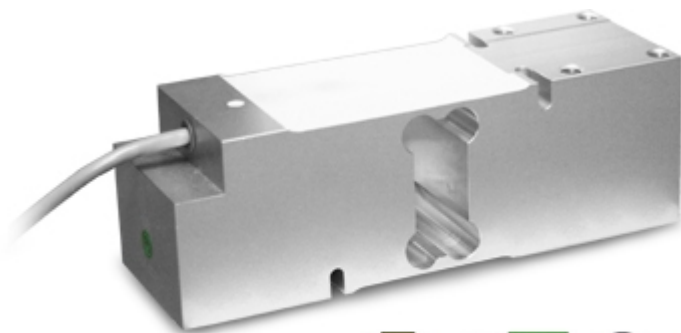


## SPM

### SPM SERIES SINGLE POINT LOAD CELLS



Load cells for off center loads, suitable for example to build CE-M approved scales with a single load cell; maximum platform dimensions of 600x600 mm.

---

**CAPACITIES (kg):** 100, 200, 500.

---

**OIML R60. C3** precision class.

---

**Aluminium** alloy. **IP67** protection.

---

The best solution  
for advanced industrial  
applications

## MAIN FEATURES

- C3 PRECISION CLASS
- OFF CENTER LOAD COMPENSATED
- ALUMINIUM ALLOY CONSTRUCTION
- IP67 PROTECTION
- MAX. CAPACITIES FROM 100 TO 500 kg
- FOR PLATFORMS WITH DIMENSIONS UP TO 600 X 600 mm
- SHIELDED CONNECTION CABLE
- OIML CERTIFICATE AVAILABLE UPON REQUEST
- TEST CERTIFICATE AVAILABLE UPON REQUEST

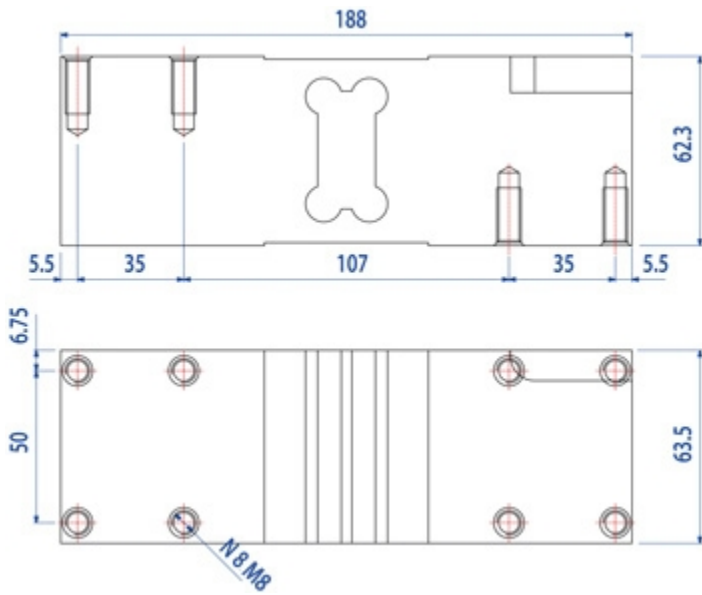
## TECHNICAL FEATURES

- Minimum load cell verification interval:  $V_{min} = E_{Max} / 15.000$
- Maximum number of verification intervals:  $n_{LC} = 3000$
- Sensitivity:  $2mV/V \pm 10\%$
- Temperature effect on zero:  $0,01\% FS/10K$
- Temperature effect on Full Span:  $0,001\% FS/10K$
- Compensated Temperature Range:  $-10^{\circ}C/+40^{\circ}C$
- Operating Temperature Range:  $-10^{\circ}C/+50^{\circ}C$
- Creep at nominal load in 30 minutes:  $0,01\% F.S.$
- Maximum excitation voltage without damage:  $15 V_{dc}$
- Input Resistance:  $300..500 \text{ Ohm}$
- Output Resistance:  $300..500 \text{ Ohm}$
- Insulation Resistance:  $>2000 \text{ MOhm}$
- Mechanical limit load in service:  $150\% F.S.$
- Destructive load:  $300\% F.S.$
- Deflection at nominal load:  $<0,5mm$
- 6-wire shielded cable, 3m long, 5mm diameter

## ATEX Version

- The CCATEX certificate makes the load cell suitable for use in hazardous areas with protection methods according to:  
ATEX II 1G Ex ia IIC T6 (Ta  $-20^{\circ}C/+40^{\circ}C$ ) TX (Ta  $-20^{\circ}C/+65^{\circ}C$ ) Ga  
ATEX II 1D Ex ta IIIC TX $^{\circ}C$  (Ta  $-20^{\circ}C/+40^{\circ}C$ ) TX $^{\circ}C$  (Ta  $-20^{\circ}C/+65^{\circ}C$ ) Da IP65.  
The certificate includes the manual and the ATEX CE conformity declaration (available in EN, DE, FR, and IT).
- **IMPORTANT:** the certificate refers to the single load cell. For systems with more load cells, it is necessary to order one certificate for each load cell.

## DETAIL 1






Dimensions (mm)

| Wiring Code |          |
|-------------|----------|
| Colour      | Function |
| YELLOW      | SHIELD   |
| WHITE       | OUTPUT + |
| GREEN       | SENSE +  |
| BLUE        | INPUT +  |
| RED         | OUTPUT - |
| GREY        | SENSE -  |
| BLACK       | INPUT -  |

## VERSIONS

### Available versions

| Codice   | Piatto<br>Max (mm) | Max<br>(kg) |
|--|--------------------|-------------|
| SPM100  | 600x600            | 100         |
| SPM200  | 600x600            | 200         |
| SPM500  | 600x600            | 500         |



“YOUR WORLDWIDE PARTNER FOR WEIGHING”

DINI ARGEO  
FRANCE sarl  
France

DINI ARGEO  
GMBH  
Germany

DINI ARGEO  
UK Ltd  
United Kingdom

DINI ARGEO WEIGHING  
INSTRUMENTS Ltd  
China

DINI ARGEO  
OCEANIA  
Australia



**COMPANY HEADQUARTERS**

Via Della Fisica, 20  
41042 Spezzano di Fiorano Modena - Italy  
Tel. +39.0536 843418

**SERVICE ASSISTANCE**

Via Dell'Elettronica, 15  
41042 Spezzano di Fiorano Modena - Italy  
Tel. +39.0536 921784



SALES AND TECHNICAL ASSISTANCE SERVICE