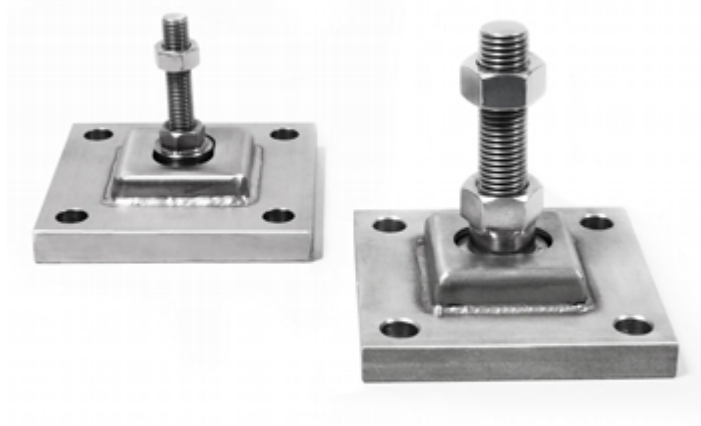


KSBH

"KSBH" ARTICULATED PLATES FOR FIXING OF SHEAR BEAM LOAD CELL



Articulated plates for shear beam load cells, SBK o SBX models. Useful for fixing the cells to the floor or to rigid structures, and for the creation of weighing systems with several support points.

**The best solution
for advanced industrial
applications**

KSB2H TECHNICAL FEATURES

- Applicable on SBxx series load cells, up to 2000kg.
- Threading M12, thread length 52mm.
- STAINLESS steel structure (AISI 304).
- Fixing plate dimensions: 120x120mm (lxw).
- Fixing holes diameter: $\varnothing = 14\text{mm}$.
- To combine with BLKM12I bush.

KSB5H TECHNICAL FEATURES

- Applicable on SBxx series load cells, from 3000 to 5000kg.
- Threading M20, thread length 65mm.
- STAINLESS steel structure (AISI 304).
- Fixing plate dimensions: 120x120mm (lxw)
- Fixing holes diameter: $\varnothing = 14\text{mm}$
- To combine with BLKM20I bush.



“YOUR WORLDWIDE PARTNER FOR WEIGHING”

DINI ARGEO
FRANCE sarl
France

DINI ARGEO
GMBH
Germany

DINI ARGEO
UK Ltd
United Kingdom

DINI ARGEO WEIGHING
INSTRUMENTS Ltd
China

DINI ARGEO
OCEANIA
Australia



COMPANY HEADQUARTERS

Via Della Fisica, 20
41042 Spezzano di Fiorano Modena • Italy
Tel. +39.0536 843418

SERVICE ASSISTANCE

Via Dell'Elettronica, 15
41042 Spezzano di Fiorano Modena • Italy
Tel. +39.0536 921784

SALES AND TECHNICAL ASSISTANCE SERVICE